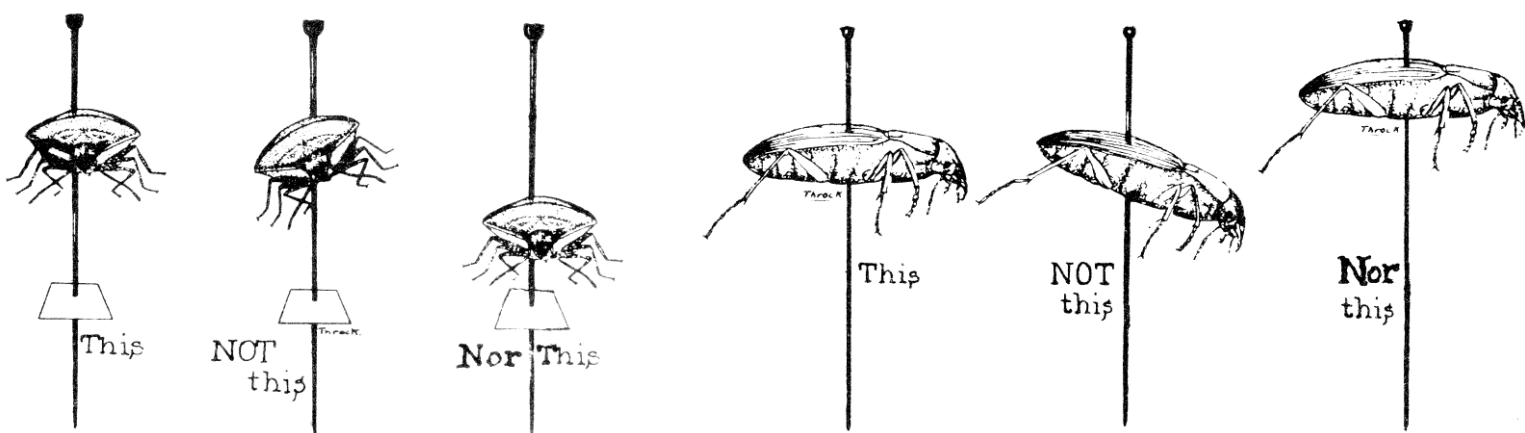
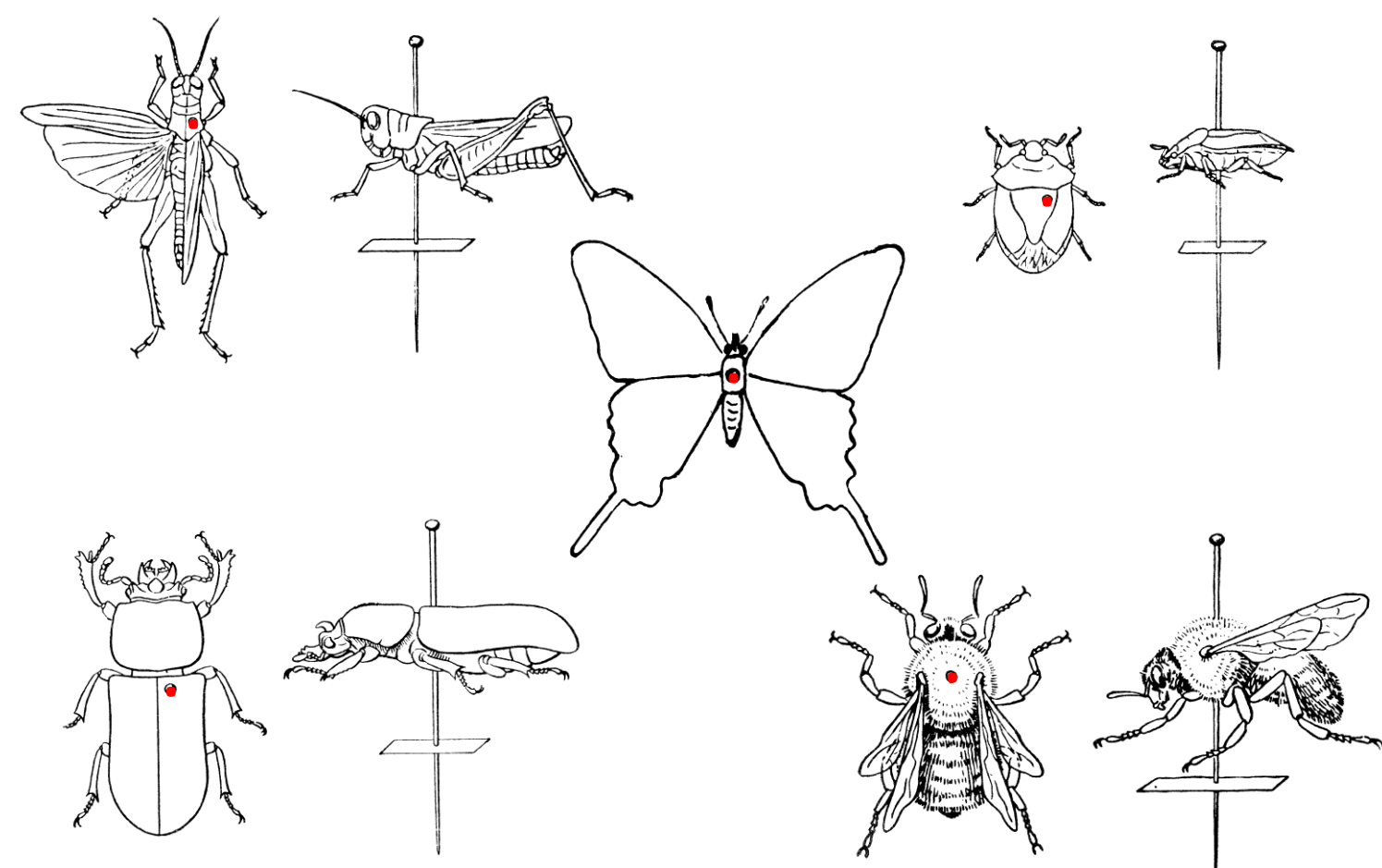
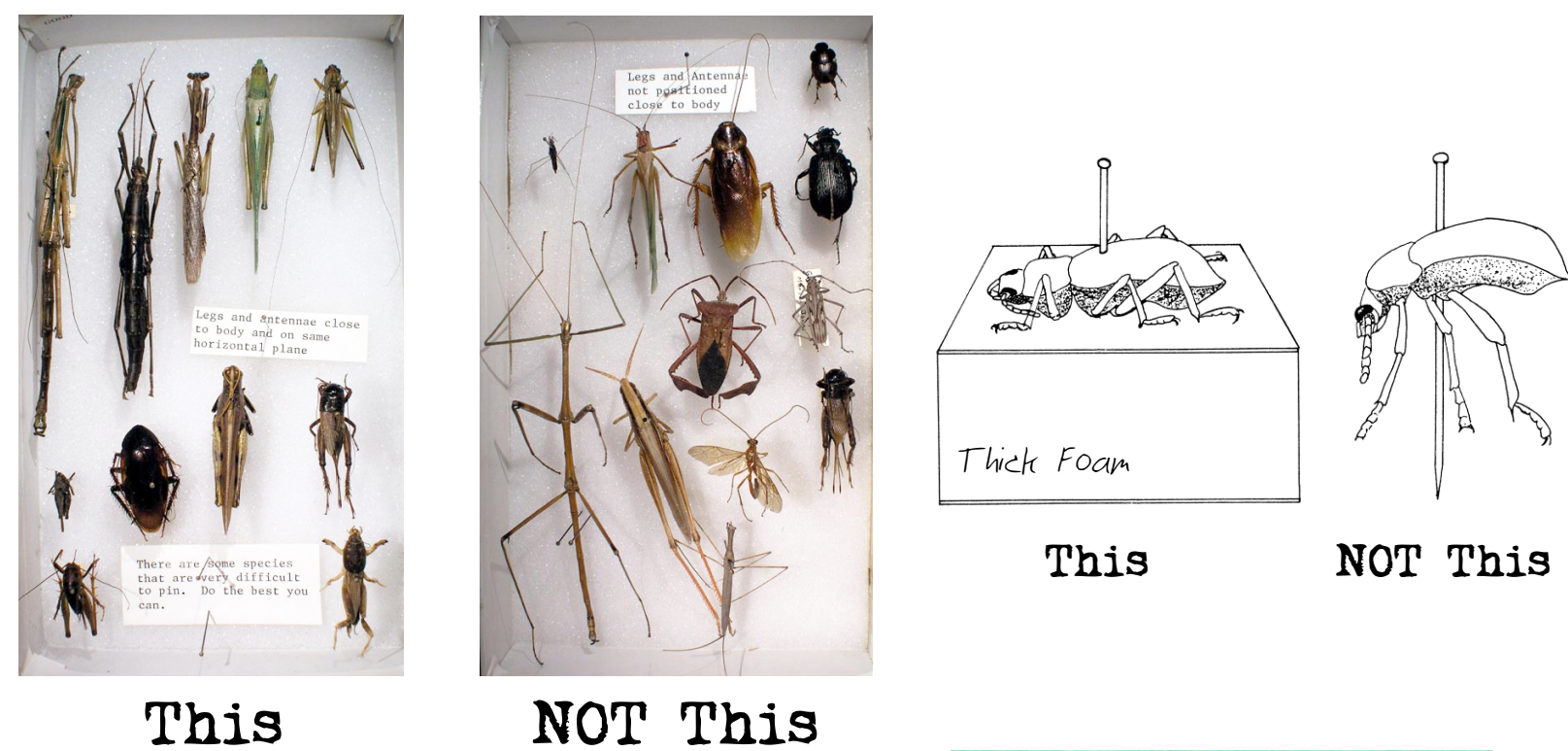


Properly Pinned Specimen

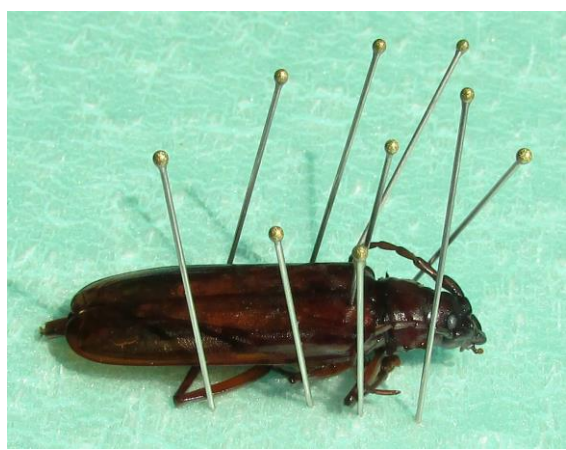
1. Pin in the Correct Place and Set to Correct Height



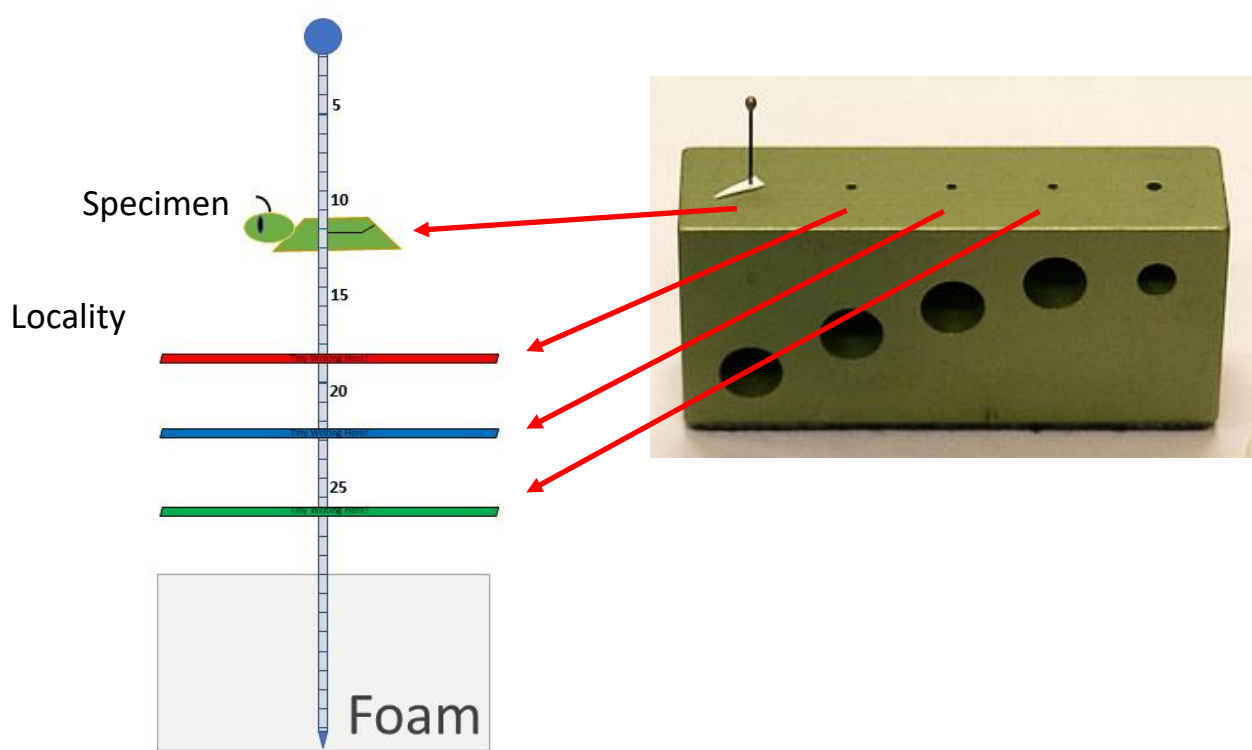
2. Appendages Held Tight



Arrange legs, etc. of fresh specimens. When the specimen dries it will stay that way. Use brace-pins if necessary.

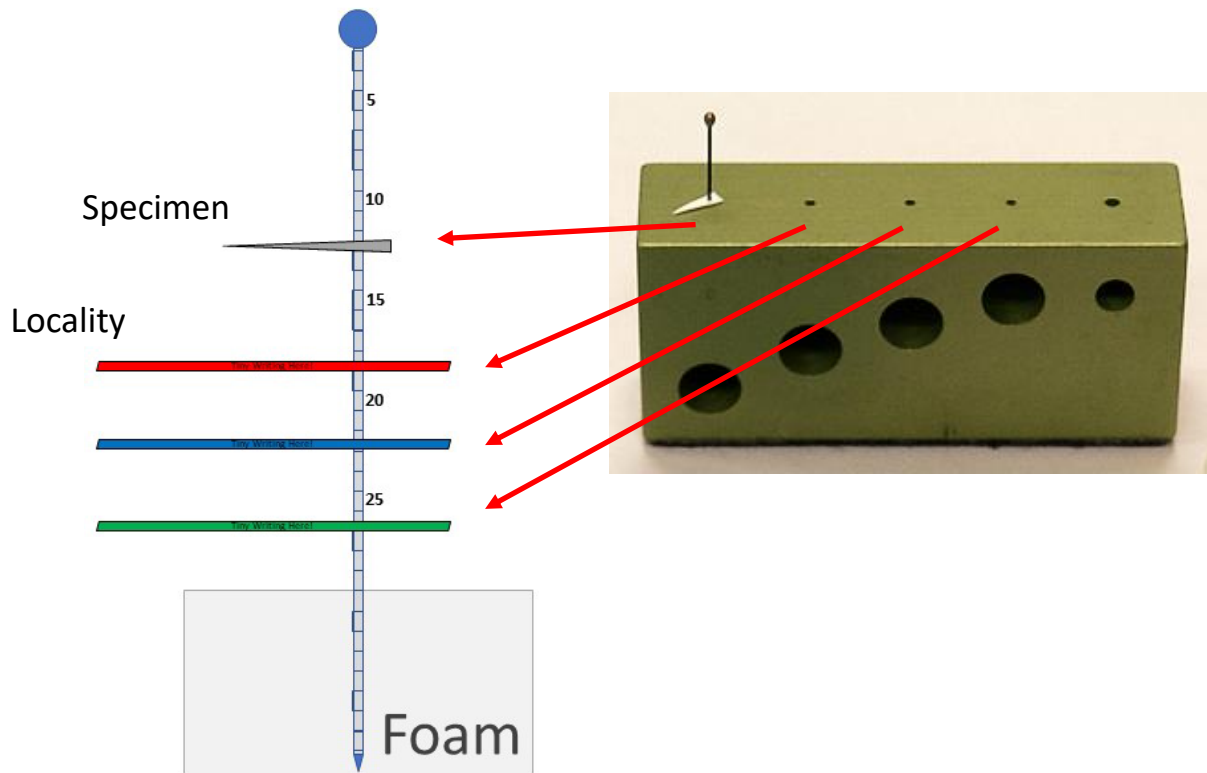


3. Specimen/Labels at Correct Height



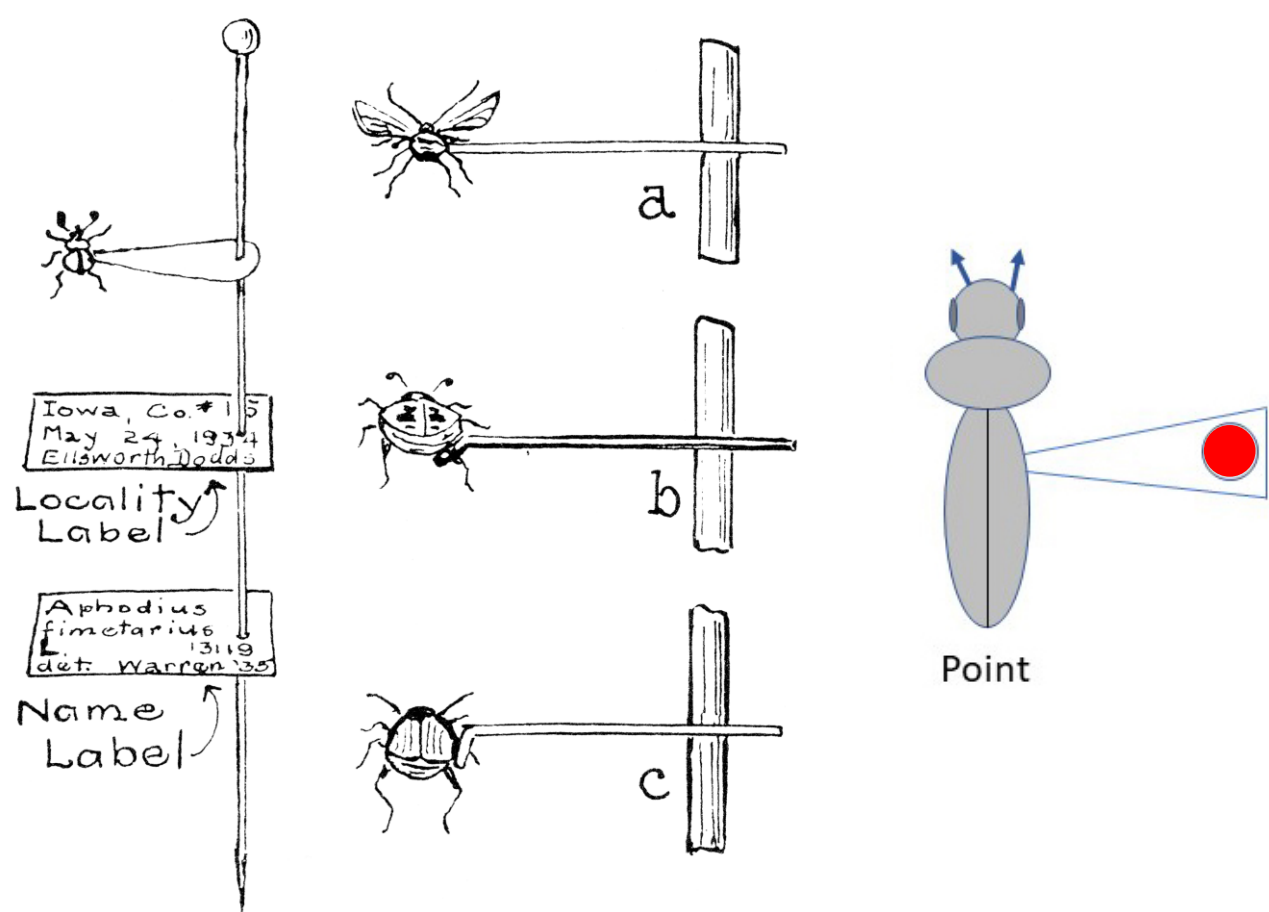
Properly Pointed Specimen

1. Put Point at Correct Height



Start with the paper point on the pin. Add labels after the specimen is attached.

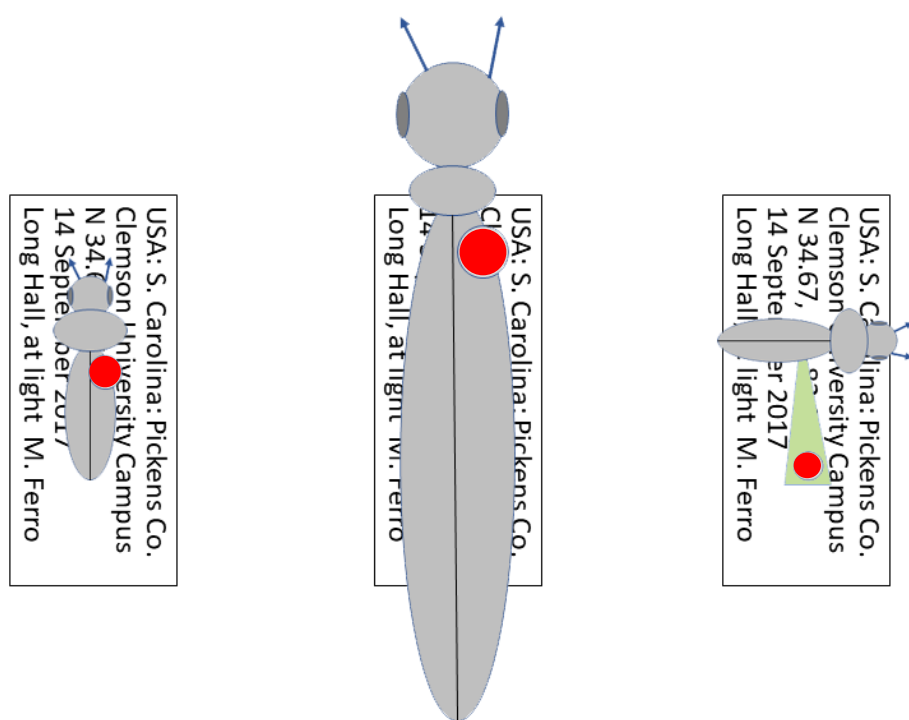
2. Glue Specimen in the Correct Orientation



Touch the tip of the point in some glue. Touch the point to the RIGHT SIDE of the specimen.

3. Labels at Correct Height (See 1 above)

Proper Label Orientation



Pinned specimens: label should be readable from LEFT and CENTERED on specimen.

Pointed specimens: label should be oriented in the same direction as the point and should be centered on the point + specimen.