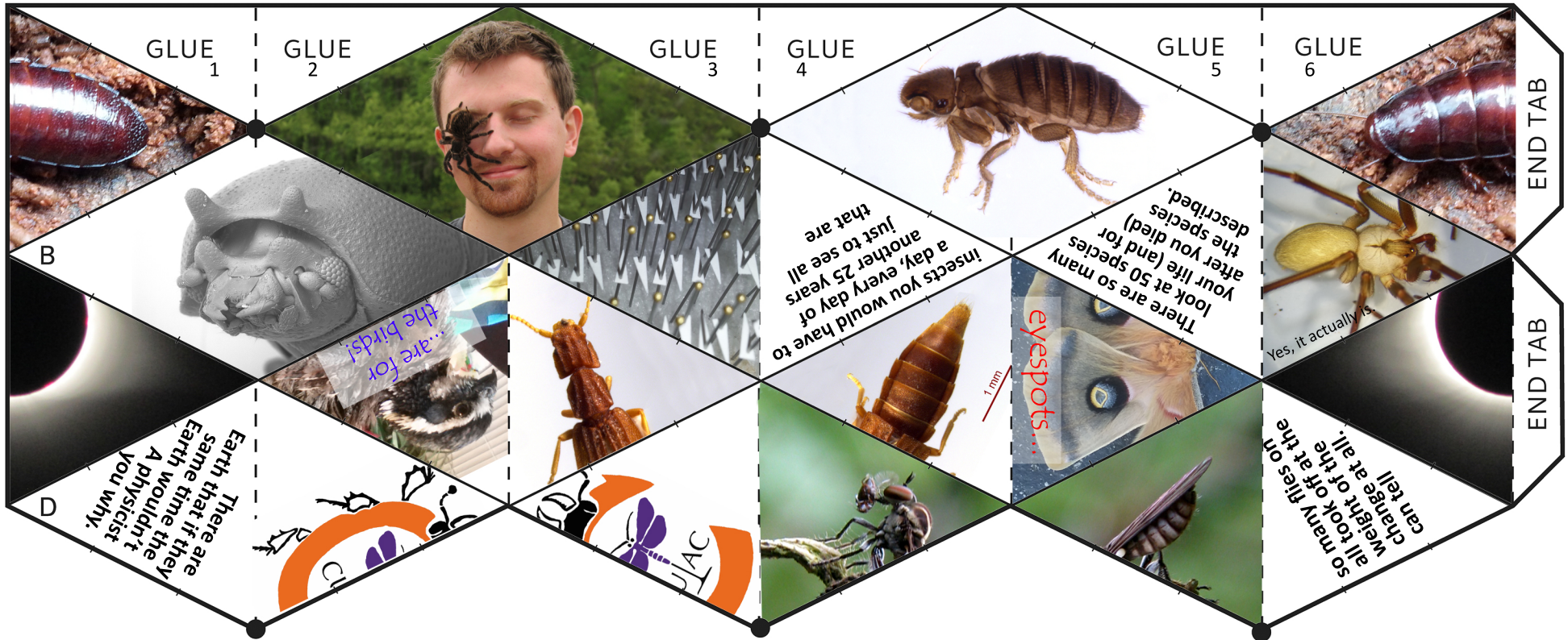
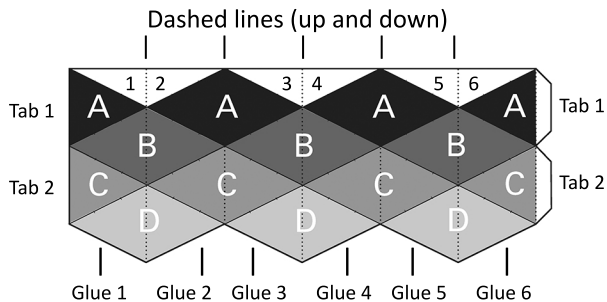


Clemson Entomology Club Flexangle!



Pattern Guide



Instructions:

1. Cut out along the bold line.
2. Valley fold dashed lines. (For a valley fold, the line falls into a "valley" created by the paper. The dashed lines are up and down.)
3. Mountain fold solid lines. (Mountain fold, the line is at the top of the fold. The solid lines are diagonals.)
4. Fold the paper to form a tube. Touch dot to dot and slide the "Glue" tabs under the upper triangle that wraps around. Glue 1 to 1, 2 to 2, etc.
5. Wrap into a circle and glue the End Tabs into the far end.
6. Enjoy with child-like abandon.